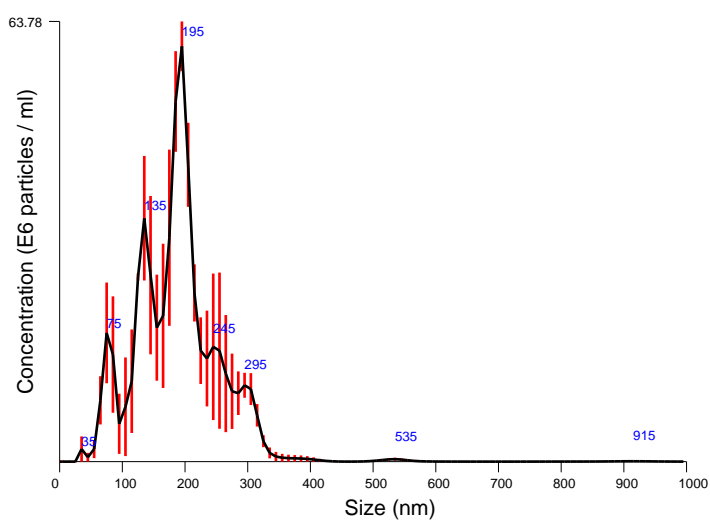


FTLA Size / Concentration graph for Experiment:
Capture 2022-10-27 01-44-35



Averaged FTLA Size / Concentration
Red error bars indicate +/- 1 standard error of the mean

<div>Included Files</div> <div>Capture 2022-10-27 01-45-24 Capture 2022-10-27 01-46-07 Capture 2022-10-27 01-47-21</div> <div>Details</div> <div><div>NTA Version:NTA 3.0 0060</div><div>Script Used:SOP Standard Measurement 04-24-10PM 13Mar2020.txt</div><div>Time Captured:01:44:35 27/10/2022</div><div>Operator:Ruth</div><div>Pre-treatment:</div><div>Sample Name:10M.3pp</div><div>Diluent:Cyclohexane</div><div>Remarks:</div></div> <div>Capture Settings</div> <div><div>Camera Type:SCMOS</div><div>Camera Level:8</div><div>Slider Shutter:350</div><div>Slider Gain:250</div><div>FPS45.5</div><div>Number of Frames:1363</div><div>Temperature:22.0 °C</div><div>Viscosity:(Water) 1.0 cP</div><div>Dilution factor:Dilution not recorded</div></div> <div>Analysis Settings</div> <div><div>Detect Threshold:20</div><div>Blur Size:Auto</div><div>Max Jump Distance:Auto: 6.6 - 8.5 pix</div></div>	<div>Results</div> <div>Stats: Merged Data</div> <div><div>Mean:183.1 nm</div><div>Mode:193.2 nm</div><div>SD:76.3 nm</div><div>D10:92.7 nm</div><div>D50:177.8 nm</div><div>D90:264.1 nm</div></div> <div>Stats: Mean +/- Standard Error</div> <div><div>Mean:183.0 +/- 0.9 nm</div><div>Mode:190.9 +/- 3.2 nm</div><div>SD:73.3 +/- 9.3 nm</div><div>D10:91.9 +/- 9.4 nm</div><div>D50:178.0 +/- 2.5 nm</div><div>D90:266.5 +/- 9.6 nm</div><div>Concentration:5.50e+008 +/- 8.89e+007 particles/ml 27.9 +/- 4.5 particles/frame 31.6 +/- 5.1 centres/frame</div></div>
---	---